

Note ANALYSIS of Recording

27 FEB 08

Key:

Alley - Bn - C2 - WAV
 Note natural 'C' octave (2nd)
 flat sharp

(C MAJOR)

Alley - Bn - C2 - WAV ~~###~~ B
 A
 E

Alley - An - C1
 1 E
 B
 A

Alley - En - C2 E
 B
 A

Autoshop - Ef - c4 - wave (E, high octave) H
 (Cb →) H

auto(lift) - dn - En - (combined) - c5 - WAV D, E

D, E
 2 octaves ~~low~~ (c5)
 high

> D, E DISSONANCE
 • Not in western SCALE.
 • Between D⁴ + E⁴

auto - Gn - c5 - WAV (Higher octave = H) H G

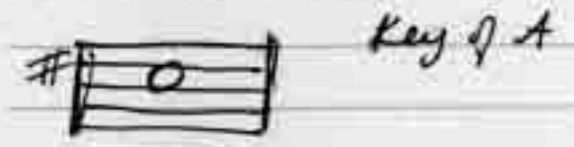
auto - Long - Gn - c4 H G

Weld - Bn - c3 H B

Auto-Bn-An- (combined-c3) B, A



Auto-Cs-c4 C#



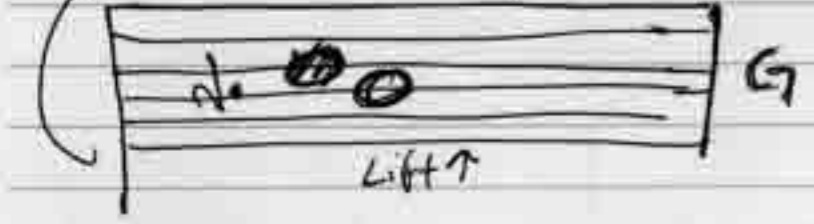
Autolift - Cn-BF-G -c7
SEQUENCE



Key ΔBb

CHORD

Bb
G
D



Auto-Af-c1.wav Key Eb Ab



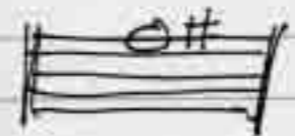
Auto-squeek - Bn-Bn-c3 D B



Auto-Chord - En-An E A



Auto-Fs F#



Auto-Af- (c3) (Ab) G#



Carrev - Cn - c3

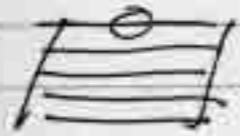


I'm noticing my sight hearing abilities are improving w/ this. C
I am also can usually pin point the note on a keyboard the 1st try.

Carstart - En - c3 E



Carren - Fn - c3 F



lift - Gn - c4 -solid tone G



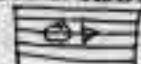
Auto shop = (D, E) G, G, B, (B, A), C#, (Bb, G, D),
G=3 (4 w/ diss) Ab, (D, B), (E, A), F#, Af, E, F, G
B=1 (3 w/ 2 diss not) Bb=1
Cb=1 A=(2 diss) D=(3 diss) E=1 (2 diss)
Ab=2 F=1 F#=1 G (0 chord)



Construction Mtr analysis

27 Feb 08

Construction - Bf c4



Key of Bb

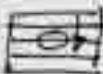
B^b

const - Bn - c3



B

const - Bf - c2 m



B^b

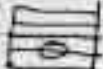
const - Af - c2



Key of Ab

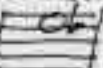
A^b

const - Gn - c2



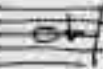
G

const - Bn - Ef - c5



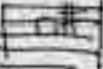
E^b

const - sau2 - Bf - c3



B^b

const - pipedrop - Cs - c3



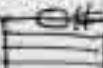
C[#]

const - Gn - c3



G

const - fs - c2



F[#]

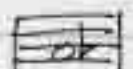
Construction cont.

const - Gn - c2 waw



G

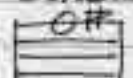
const - Af - c2



A^b

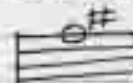
A^b

const - fs - c2



LOW const unsure - fs - c2

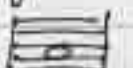
? F[#]



low octave! *

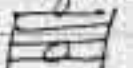
yell - An - c4

A



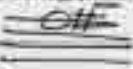
engine - An - e2

A



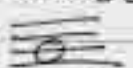
const - fs - c2

F[#]



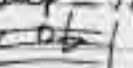
rumble - Bn - c2

B



Bn - HIGH - Ef - c5

E^b

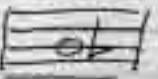


Const. Cont
truck - Fn - c2



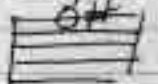
F

truck - Bf - c2



Bb

drop - fs - c3



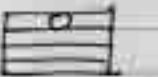
F#

const - Gn - c3



G

const - En - c2



E

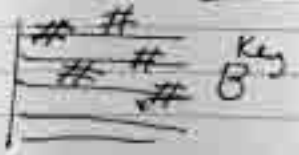
A = 2
B = 2
C = 0
D = 0
E = 1
F = 1
G = 4

Ab = 2
Bb = 4
Cb = 1
Eb = 1
F# = 4
G# = 0

G
Bb
F#
A
B
Ab



Gmmaj7



Gallery - build 28 Feb 08 Note Analysis
shoesgutok - En - c4 waves - 28 Feb 08



E

~~gallery Bn - c6~~

LOST FILES



~~gallery H/GA - Fn - c6~~

LOST FILES



~~galdrill - An - c4~~



drill - En - c5

E



galt/16H - Fn - c6

F



galdrill - Gn - c4

G



female - F_n - c⁴

F



female 2 - B_n - c³

B



drill D_n - c⁵

D



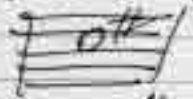
drill 2 - C_s - c⁵

C#



drill 3 - C_s - c⁵

C#



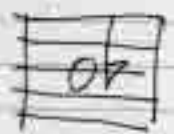
squeak gal - G_s - c⁴

G#



High drill - B_f - c⁷

Bb



long drill - A_n - c³

A



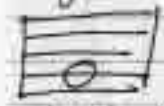
male voice - B_f - c²

Bb



high - G_n - c⁵

G



Now - B_n - c³

B



• gallery had, all of 1 same noises throughout - drill mostly

A=1
B=2
C=∅
D=∅
E=2
F=2
G=2

A_b=∅
B_b=2
C_#=2
~~B_b~~
E_b=∅
F_#=∅
G_#=1

B
E
F
G
B_b
C_#

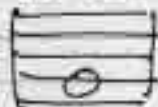
X
No chords



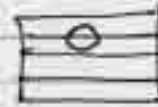
Gym-22feb08 → Note Analysis
29 Feb 08

Sounds of ^{the} gym, people talking, clank of weights, Bull game in distance, chatting, distant radio.

tone Gn-c4 G



Voice Dn-c3 (male) D



• voice 2 En-c3 (male) E



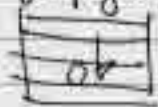
• beep Bf-c4 Bb



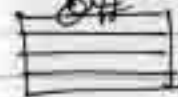
keep 2 En-c5 E



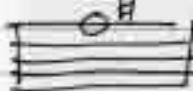
yurpyell Af-c4 A#



hey Fs-c4 (male) F#



Ooh Fs-c3 (male) F#



• Man Gn-c3 (male) G



whistle Bf-c5 Bb



• Low Dn-c1 D



Hum En-c3 E



medical Gn-c3 (male) C



Gym cont.

A = \emptyset
 B = \emptyset
 C = 1
 D = 2
 E = 3
 F = \emptyset
 G = 2

A \flat = 1
 B \flat = 2
 C \sharp = \emptyset
 D \sharp = *
 E \flat = \emptyset
 F \sharp = 2
 G \sharp = \emptyset

* E
 D
 G
 B \flat /A \sharp
 F \sharp

E dim

B \flat , G, E

G, m \flat

G, A \sharp , D, E

Lacross game 2 Feb 08

Note Analysis

Remarks

whistle - E \flat - c 4



c 4 E

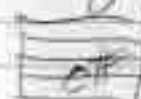
Rumble - E \flat - c 3



c 3 E

maryell - G \sharp - c 4

c 4 G \sharp



crowdwo - D \natural - c 5

c 5 D



whistle - D \natural - c 5

c 5 D



guy - F \sharp - c 3

c 3 F \sharp



girl - F \sharp - c 5

c 5 F \sharp





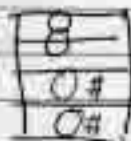
Not enough data - too much lead
music played over interchange to analyze.

A	1	4b	
B		6b	D
C		4#	E
D	2		F#

E	2	9b	
F		F# 2	<u>Dadd9</u>
G		G# 1	↳ same



F#/Gb Fmaj5



Handwritten scribble or signature at the bottom of the page.